

How to open the energy storage device direction in genshin impact gear



Overview

The video above demonstrates how to open the Energy Storage Warehouse, which is located east of the map. A tip is to have both the Drivetrain and the Core Gear Drive to look completely opposite of each other before running the operator device.

The video above demonstrates how to open the Energy Storage Warehouse, which is located east of the map. A tip is to have both the Drivetrain and the Core Gear Drive to look completely opposite of each other before running the operator device.

Here's how players can open the Energy Storage Warehouse and Supply Warehouse 2 in Genshin Impact. RELATED: Genshin Impact: Millennial Pearl Seahorse Boss Guide To get a Gear Drivetrain in Genshin Impact, players must simply go to the Core Gear Drive in the center of the Abandoned Production Zone.

Follow the steps below to complete this logistically-confusing puzzle. Genshin Impact's An Eye for an Eye World Quest, which falls under the Unfinished Comedy quest series, involves helping two prisoners make a daring escape from the Fortress of Meropide. After finding the Geode Mine Shaft, you.

Fixed Storage Devices are energy storage units that are commonly seen near Energy Transfer Terminals and allow energy to be transferred from storage devices to them. They can easily be classified due to how their bases are fixed to the ground. Unlike the Fixed Storage Device, these can be picked up.

Energy Transfer Terminals can be used to transfer energy from one device to another. In some puzzles, the player may have to move an Energy Transfer Device to be within range of an Energy Transfer Terminal in order to progress. Some devices without energy can be Arkhe-infused, and hitting the.

Players must collect three Energy Storage Devices and use them on three different Terminals to remove the barriers blocking the Research Terminal. The step is quite simple and easy to follow as the Research Terminals are marked on the map in Genshin Impact. However, players must be careful of

the.

Gear Drivetrain is a mechanical puzzle that enables you to go through the four main valves inside the Fortress of Meropide's Abandoned Production Zone. See how to get and install Drivetrains and how to operate the drain valve in Genshin Impact here! The Drive Valve contains two types of gears:. How do you use energy storage devices in Genshin Impact?

Players must collect three Energy Storage Devices and use them on three different Terminals to remove the barriers blocking the Research Terminal. The step is quite simple and easy to follow as the Research Terminals are marked on the map in Genshin Impact.

How do I open the energy storage warehouse in Genshin Impact?

To open the Energy Storage Warehouse in Genshin Impact, the main Core Gear Drive should point northwest. Remove the small Gear Drivetrain when it points inward, then run the main Core Gear Drive until it faces northwest. Once the Energy Storage Warehouse door is open, remove the Gear Drivetrain and move inside to install it.

How do you unlock a research terminal in Genshin Impact?

Acquiring the Energy Storage Device and unlocking the Research Terminal is part of the An Eye for An Eye Quest in Genshin Impact. Players must collect three Energy Storage Devices and use them on three different Terminals to remove the barriers blocking the Research Terminal.

How do you get a gear drive in Genshin Impact?

To get a Gear Drivetrain in Genshin Impact, players must simply go to the Core Gear Drive in the center of the Abandoned Production Zone and remove it from the edge of the central device. To open the doors in this area, the small Gear Drivetrain must face inwards when the Core Gear Drive points at the Gear Drivetrain's spot.

How do you open supply warehouse 2 in Genshin Impact?

To open Supply Warehouse 2 in Genshin Impact, keep rotating the Core Gear Drive until it faces southwest. Remember that all players need to do is remove the small Gear Drivetrain when it points inward, then wait until the main hand points southwest. Enter the Supply Warehouse 2 and install the Gear Drivetrain.

How do I read a cipher letter in Genshin Impact?

Fixed Storage and Energy Transfer Device Cipher Letters are also present in Genshin Impact's 4.1 update. These sigils can only be deciphered through the use of the Energy Transfer Terminals' Viewfinders. Simply aim your crosshairs at the Letter to read its message.

How to open the energy storage device direction in genshin impact



Genshin impact how to fixed storage device and energy data ...

in this video i will show you guys how to active the storage device in Genshin Impact, follow the steps and you should be good to go.
 #genshinimpact #genshin

Acquire the energy storage device and unlock the ...

Acquire the energy storage device and unlock the research terminal ahead Genshin Impact All 3/3 video. All 3/3 Acquire the energy ...



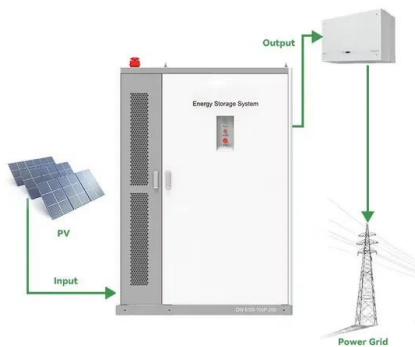
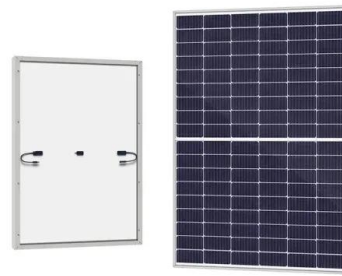
How to get gear drivetrain when its stuck in another ...

This is the official community for Genshin Impact (??), the latest open-world action RPG from HoYoverse. The game features a massive, gorgeous map, an ...

Acquire the energy storage device and unlock the research ...

In this video, Learn how to acquire the Energy Storage Device and unlock the Research

Terminal as part of the "An Eye for An Eye" quest in Genshin Impact.



How to solve Gear Drive Puzzle (Clock Work) Unfinished Comedy

#guide #genshin #impact #howto #location #shrine How to solve Gear Drive Puzzle (Clock Work) Unfinished Comedy - Genshin ImpactObjective: Unfinished Comed

Operate the drive valve to open the passage leading to the ...

Follow these instructions to reach the Geode Mine Shaft, acquire the energy storage device, and unlock the research terminal ahead. Genshin Impact is a popular free-to-play action role-playing



Genshin Impact: Operate the Drive Valve to Open Access to ...

Operate the Drive Valve to Open Access to Supply Warehouse 1 When you finish talking to Caterpillar after arriving in the Abandoned Production Zone, you will be given a ...

How to Get Chaos Device and Effects , Genshin Impact|Game8

Chaos Devices are ascension materials needed for certain weapons in Genshin Impact. Learn which weapons use Chaos Devices and where to get Chaos Devices in this guide!

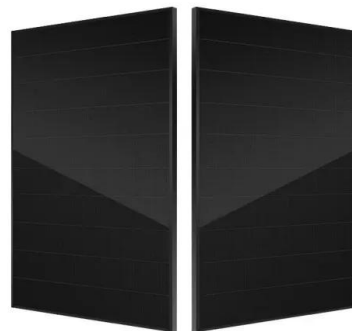


Evermoon Seal Locations , Genshin Impact|Game8

Evermoon Seals are collectible items in Nod-Krai that can open hidden treasure vaults of each island in Genshin Impact. Check out ...

Abandoned Production Zone , Genshin Impact Wiki

Abandoned Production Zone is a point of interest located in Fortress of Meropide, Liffey Region, Fontaine. It can be accessed using the lift near the Teleport ...


☒ LIQUID/AIR COOLING

☒ ON GRID/HYBRID

☒ PROTECTION IP54/IP55

☒ BATTERY /6000 CYCLES

Genshin Impact: Acquire the energy storage device ...

During An Eye for an Eye World Quest in Genshin Impact, travelers get the objective to Acquire the energy storage device and unlock the ...

Fixed Storage Device and Energy Transfer Device , Genshin Impact

Storage devices can provide energy to Transfer and Research Terminals. Pick up a portable storage device and put it next to a terminal that has stopped functioning to return it to normal ...



All Gear Drivetrain Chests Genshin Impact

All Gear Drivetrain Chests Genshin Impact video. All Gear Drivetrain Chests Genshin Impact guide & locations. Here you can see where to find All Gear Drivetr

Genshin Impact Fontaine Research Institute ...

Step 4: Afterward, extract the energy from the Fixed Storage Device and adjust your crosshair to target the terminal under the Ousia Block to switch the ...



Energy Concentrating Component Locations and How to Use

Energy Concentrating Component locations are found in Fontaine for Genshin Impact 4.1. Check out how to get all components, and how to use it to unlock the cage in ...

Tutorial/Fixed Storage Device and Energy Transfer Device

Storage devices can provide energy to Transfer and Research Terminals. Pick up a portable storage device and put it next to a terminal that has stopped functioning to return it to normal ...



Energy Transfer Terminal

Energy Transfer Terminals are an exploration mechanic in Fontaine currently found in the Liffey Region and Fontaine Research Institute of Kinetic Energy Engineering Region. Energy ...



Artificed Dynamic Gear , Genshin Impact Wiki , Fandom

Artificed Dynamic Gear is a Character and Weapon Enhancement Material dropped by Clockwork Meka or by converting Maintenance Meks into "Maintenance Mek" Salvaged Parts via ...



Fixed Storage Device and Energy Transfer Device

Storage devices can provide energy to Transfer and Research Terminals. Pick up a portable storage device and put it next to a terminal that has stopped ...



Road to the Singularity Quest Guide , Genshin ...

3 ??? Road to the Singularity is a World Quest introduced in Fontaine in Genshin Impact 4.1. See how to unlock this quest, its walkthrough, and all the ...

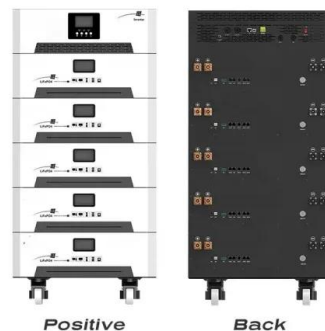


How to Use Energy Transfer Terminals , Genshin Impact|Game8

Energy Transfer Terminals are a new puzzle mechanic in Genshin Impact 4.1. Learn how to use it, how to solve its puzzles, and what it's for in this guide!

Gear Drivetrain and Drive Valve Puzzle , Genshin ...

The video above demonstrates how to open the Energy Storage Warehouse, which is located east of the map. Gears Move Clockwise and Anti ...



HOW DO I OPEN THE ENERGY STORAGE WAREHOUSE IN GENSHIN IMPACT

How do you use energy storage devices in Genshin Impact? Players must collect three Energy Storage Devices and use them on three different Terminals to remove the barriers blocking the ...

How to Get Artificed Dynamic Gear and Locations

3 ???· The Artificed Dynamic Gear is an Ascension Material obtained by defeating a Clockwork Meka in Genshin Impact 4.0. See where to find it, how to use it, its rarity and ...



Contact Us

For catalog requests, pricing, or partnerships, please visit:
<https://solar.j-net.com.cn>