

Ring main unit energy storage logo



Overview

What is a smart ring main unit (RMU)?

Seamlessly integrated with the Easergy T300 remote terminal unit (RTU) and our innovative conditional monitoring sensors, the smart ring main unit (RMU) is an innovative solution that makes it easier for you to answer the evolving challenges of electrical distribution.

What is ring main unit (RMU)?

Ring Main Unit, RMU is a compact, enclosed and sealed type of Switchgear used for medium voltage power distribution. It is a complete Switchgear in itself. A complete Switchgear means, assembly of required switching devices, protection device as well as metering device.

What is ring main unit?

Ring Main Unit comprises of one incomer feeder and one or more outgoing feeder. The incomer feeder is either Vacuum Circuit Breaker or SF6 Circuit Breaker with associated Disconnect Switch and Earth Switch. This incomer feeder is given with the provision of bushing protruding from the enclosure of RMU for supply cable connection.

What are the different types of ring main units?

Indoor as well as outdoor types of Ring Main Units are available. Ring Main Unit comprises of one incomer feeder and one or more outgoing feeder. The incomer feeder is either Vacuum Circuit Breaker or SF6 Circuit Breaker with associated Disconnect Switch and Earth Switch.

Ring main unit energy storage logo

Highvoltage Battery



What Is a Ring Main Unit (RMU) Switchgear? A ...

This article explores ring main unit switchgear, explaining its key features, operation, and various types, to help you understand its role in ...

Ring main unit

Ring main unit In an electrical power distribution system, a ring main unit (RMU) is a factory assembled, metal enclosed set of switchgear used at the load connection points of a ring-type ...



???_???

???(Ring Main Unit)????????(?????)????????????
????????????????????,????????????????,?????? ...

What is Ring Main Unit (RMU)?

A ring main unit (RMU) is a set of electrical equipment used for power distribution, primarily in high-voltage systems. Its working principle is based on the design of a ...



12V 10AH



RING MAIN UNIT RMU APPLICATIONS AMP ADVANTAGES

Ring main unit energy storage battery standard
In an electrical system, a ring main unit (RMU) is a factory assembled, metal enclosed set of used at the load connection points of a ring-type ...

Cable Accessories,Residential Energy Storage System,Ring ...

With decades of experience in the power and energy sector, Ceepower integrates R& D, manufacturing, sales, and service into a unified operation. The delegation acknowledged ...



Power Plant Equipment: Ring Main Units (RMU)

Discover the vital role of Ring Main Units (RMUs) in power plants. Explore their functions, types, and benefits, including grid stability and safety improvements in modern ...

Ring Main Unit Switchgear: A Comprehensive Guide

Figure 1: Ring Main Unit Switchgear 1) What is a ring main unit (RUM)? A Ring Main Unit, often called an RMU, is a compact switch cabinet that manages power flow in a ...



Understand the Importance of Smart Ring Main Unit ...

Discover the benefits of a smart ring main unit (RMU) for secure power distribution in residential and industrial settings, with continuous power ...

What is a Ring Main Unit (RMU)? Key Components and Working ...

5) Delixi Ring Main Unit Delixi Electric provides a variety of Ring Main Units (RMUs) for power distribution and system reliability. These are essential parts of medium ...



[Ring main unit energy storage logo](#)

alfanar ME6 units are Modular Extensible Air insulated metal enclosed switchgear, its also designed as a Metered Ring Main Units (MRMU) for supplying sustainable energy, protecting ...

What is Ring Main Unit

A Ring Main Unit (RMU) is considered an important component in electrical power distribution networks, primarily used in medium voltage applications. What is The ...



How does the ring main unit store energy? , NenPower

How does the ring main unit store energy? 1. Ring Main Units (RMUs) are electrical distribution devices that efficiently manage energy flow ...

A GUIDE TO RING MAIN UNITS RMU IN WIND POWER ...

Ring main unit energy storage battery standard
In an electrical system, a ring main unit (RMU) is a factory assembled, metal enclosed set of used at the load connection points of a ring-type ...



FAQs Guide for Ring Main Unit

Ring main unit is a group of electrical transmission and distribution equipment (high voltage switchgear) installed in metal or non-metal insulated cabinet or assembled into interval ring ...

65 Rmu Royalty-Free Images, Stock Photos

Electrical energy substation in a power plant.
(RMU Ring main unit) RMU letter logo design with white background in illustrator, vector logo modern alphabet ...



[Ring main unit for smart grids](#)

Seamlessly integrated with the Easergy T300 remote terminal unit (RTU) and our innovative conditional monitoring sensors, the smart ring main unit (RMU) is an ...



Ring Main Unit Switchgear: A Comprehensive Guide

Figure 1: Ring Main Unit Switchgear 1) What is a ring main unit (RUM)? A Ring Main Unit, often called an RMU, is a compact switch cabinet ...



[Ring Main Unit- hezong_Ring_network](#)

TPS3 Atmospheric pressure Sealed Air Insulated Ring Main Unit TPS3 atmospheric pressure sealed air insulated ring main unit is a new type of power distribution equipment launched by ...

Custom Ring Main Unit, Ring Main Unit Manufacturer

Reliable power supply is essential for the project's success. As a trusted supplier for the Southern Power Grid, Ceepower is providing advanced ring main units to support this world-class ...



Ring Main Unit (RMU) Feeder Stock Photo

Ring Main Unit (RMU) feeder. Ring Main Unit (RMU): In an electrical power distribution system, is a factory assembled, metal-enclosed set of switchgear ...



A Visual Guide to Understanding Ring Main Circuit Diagrams

The ring main circuit is a common electrical wiring installation in homes and commercial buildings. It's commonly used to supply power to sockets, lighting circuits, and other electrical appliances. ...



Ring Main Unit Electric Energy Storage: Powering the Future of ...

Enter ring main unit electric energy storage systems - the smartphone upgrade your grid didn't know it needed. These hybrid solutions are revolutionizing how we manage ...



Ring Main Unit Basics: What It Is and How It Works in ...

Learn what a Ring Main Unit (RMU) is, how it works, its components, types, applications, and key factors for selecting the right one for ...

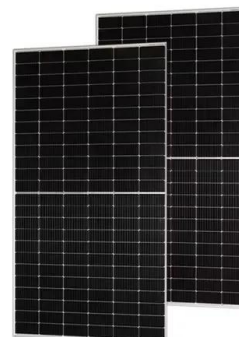


Ring main unit energy storage principle

The panel shows that the earthing switch is disconnected. Then insert the handle on the circuit breaker panel and rotate it in the direction of energy storage as shown by the arrow. After that, ...

MEDIUM VOLTAGE RING MAIN UNIT

A - SFA-RM Solution SFA-RM units are designed for supplying reliable energy, protecting electrical equipment in secondary distribution networks up to 17.5 kV. SFA-RM units are the ...



Novel architectures for power management in AC ring main

...

The Domestic Photovoltaic (DPV) installation along with Domestic Energy Storage System (DESS) can play effective role in AC Ring Main Residential Distribution ...

???:(Ring Main Unit)????????? ...

???:(Ring Main Unit)?????????(?????)?????????????
 ?????????????????????,????????? ...



 LFP 48V 100Ah

Ring Main Unit: Key to Efficient Power Distribution

Discover the crucial role of Ring Main Units (RMUs) in power distribution, enhancing network redundancy and smart grid integration. Learn about eco-friendly ...

A Visual Guide to Understanding Ring Main Circuit ...

The ring main circuit is a common electrical wiring installation in homes and commercial buildings. It's commonly used to supply power to sockets, lighting ...



Contact Us

For catalog requests, pricing, or partnerships, please visit:
<https://solar.j-net.com.cn>