

Switchgear circuit breaker energy storage position



Overview

How to energize a switchgear section?

Earth the switchgear section and secure the working area in accordance with section 4 and EN 50110 standard.— Switch the mcbs 1) of the re order to prevent the switchgear section being ener-gized by remote cont .1) mcb: miniature circuit-breaker— Dismantle the cover on the relevant cable termination com-partment.?

Isolate all voltage.

How to protect the switchgear section?

Earth the switchgear section and secure the working area in accordance with section 4 and EN 50110 standard.— Switch the mcbs 1) of the re evant operating mechanisms off in order to prevent the switchgear secti being ener-gized by remote control.— Dismantle the cover on the relevant cable termination com-partment.?

Isolate all voltage.

What is a switchgear section?

The switchgear sections described are comprised of full depth structural frames and components providing separate compartments for drawout breakers, buses, and auxiliary equipment. In addition, the section main bus and intersection bus work may be isolated (optional) from the primary entrance cable area with segregating barriers.

Where is the control compartment located in a switchgear?

the control compartment, located at the front of the switchgear. All electrically operated equipment connects to a control circuit protective device.SACE Emax Circuit BreakersThe SACE Emax series of circuit breakers consists of a sheet steel structure which h.

How should a switchgear be stored?

Indoor switchgear should be stored in an atmospherically controlled environment until installation. The switchgear should be kept clean and dry. Humidity shouldn't exceed 80% and temperature should be between 40 degrees F and 110 degrees F. Temperature fluctuations should be avoided.

What is metal enclosed switchgear?

The successful performance of Metal-Enclosed Switchgear depends as much on proper installation and maintenance as it does on good design, careful manufacture and correct application. Siemens Type WL Metal-Enclosed Switchgear is precision built equipment designed to function efficiently under normal operating conditions.

Switchgear circuit breaker energy storage position



Common fault phenomena and maintenance methods ...

At this time, it should be checked whether the power supply on the terminal block of the switch cabinet is in, and whether the control switch ...

P-BA-0000211 mIHVZ V11

For details about technical design and equipment like e.g. technical data, secondary equipment, circuit diagrams, please refer to the order documents. The switchgear is ...

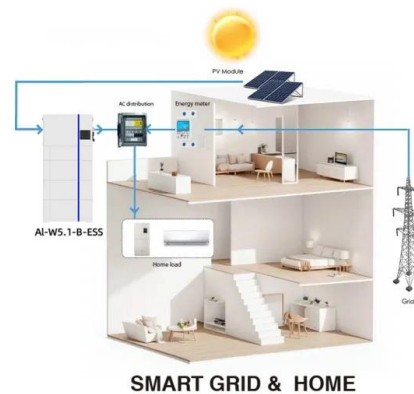


Metal-enclosed switchgear, switch and fixed mounted ...

General Description Eaton's MSB assemblies (metal-enclosed switch and breaker) consist of a load interrupter switch (Type MVS) in series with a fixed mounted vacuum circuit breaker (Type ...

Battery Energy Storage System (BESS) Electrical ...

Key Points of Electrical Design for Low-Voltage Switchgear: Typically includes circuit breakers, isolating switches, measuring instruments, ...



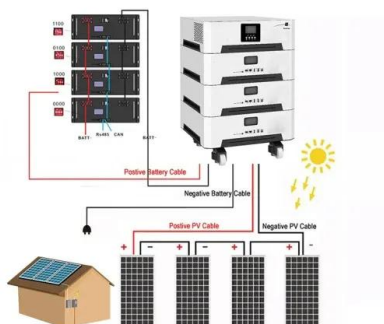
Installation and Low Voltage Switchgear Maintenance ...

Handling For structural integrity, all doors and panels must be in place and securely fastened before moving the equipment. Do not move or transport the switchgear with the circuit breakers

...

Manual for installation and operation HB 600/05 en ZX0

- Only install the switchgear in enclosed rooms suitable for electrical equipment. - With the aim of a smooth installation sequence and ensuring a high quality standard, have installation at site ...



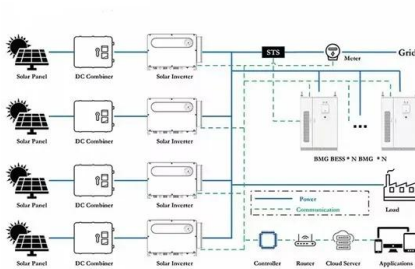
Installation and Low Voltage Switchgear Maintenance ...

For specific information regarding circuit breakers, please refer to ITSCB601933/004, Installation, Service and Maintenance Instructions for Low Voltage Air Circuit breakers.

Collection_vuSpec

This powerful collection contains over 184 IEEE Standards, Guides, and Recommended Practices, including Errata & Interpretations on Power Switchgear, Circuit Breaker, Fuse, ...

12.8V 100Ah



Circuit breakers fundamentals

A circuit breaker is an electrical switch designed to protect an electrical circuit from damage caused by overcurrent/overload or short circuit. Its basic function is to interrupt current flow ...

VM1 Vacuum circuit breaker

The withdrawable part can only be moved from the test/ 2disconnected position into the service position (and back) with the circuit breaker open (that means that the breaker must be opened ...



Power Conversion and Protection for Battery Energy Storage ...

DC Circuit Breaker and Disconnecter for BESS
Sécheron DC circuit breakers and disconnectors are integral components of battery energy storage systems (BESS). The DC circuit breaker ...

123/145kV SF GAS INSULATED SWITCHGEAR

Earthing Switches (Grounding Switches) Earthing switches are operated by motor spring and feature three-phase gang operation. They may be attached to the GIS at any position. There ...



Instructions for receiving, handling, storing and installation of

Where applicable, NEVER leave a breaker in an intermediate position in its compartment. Always crank the breaker into the fully connect-ed, the "TEST" position, or fully withdrawn position. ...

Circuit Breaker Energy Storage Retention: Why It Matters and ...

Circuit breaker energy storage retention refers to the system's ability to maintain stored mechanical energy (usually in springs) until it's needed to trip or close the circuit. ...



Switchgear for Direct Current (DC) Applications

GE offers complete services for all current and legacy air-insulated switchgear including: DC switches, dead tank and live tank circuit breakers, generator circuit breakers, compact and ...

Eaton 40.5kV ET2 AC Metal-enclosed Switchgear Catalog

ET2 switchgear is equipped with Eaton 405W-VACi series handcart vacuum circuit breakers, which is suitable for receiving and distributing electric energy in power grids, substations, ...



Instruction manual VD4 Vacuum circuit-breaker - 36/40.5

Charging of the spring-energy storage mechanism by hand (on breakers with charging motors) should only take place when the withdrawable part is in the test/disconnected or removed ...



114KWh ESS



Gas-insulated medium voltage switchgear

- Only install the switchgear in enclosed rooms suitable for electrical equipment. - With the aim of a smooth installation sequence and ensuring a high quality standard, have installation at site ...



Gis circuit breaker energy storage

Hitachi Energy's gas-insulated switchgear (GIS) portfolio offers a complete range of products for all ratings and applications from 72.5 kV to 1200 kV. Cable Accessories Capacitors and ...

WL Switchgear

Identification In the case of unit substations, the low voltage circuit breakers may be key interlocked with the transformer primary switches. Check substation numbers on packaging of ...



51.2V 150AH, 7.68KWH

Utility-scale battery energy storage system (BESS)

The SACE Tmax PV range of molded-case circuit-breakers and switch-disconnectors for photovoltaic applications offers an increasingly comprehensive, leading-edge solution that ...

INSTALLATION, OPERATIONS AND MAINTENANCE ...

Switchgear description: describes the ReliaGear LV SG low voltage switchgear and its various components. Included are the section enclosure, breaker compartment, circuit breakers, ...



NET ENERGY METERING Interconnection Handbook

For paired storage systems that have energy storage device(s) with a total rating larger than 10 kW (AC), the maximum output power of the storage device cannot be larger than 150% of the ...

Siemens 8DA Extendable Fixed-Mounted Circuit-Breaker Switchgear

The 8DA Extendable Fixed-Mounted Circuit-Breaker Switchgear is a single busbar, single-pole metal-enclosed, metal-clad, gas-insulated switchgear designed for indoor installations. It is

...



PotM-02-2021-Medium-Voltage-Breaker-Testing-ENU

1 Medium voltage circuit breakers While old medium voltage circuit breakers often used oil as interrupting medium, in modern times vacuum is the preferred medium and is thus almost ...

How Does a Circuit Breaker Store Energy? A Deep Dive into

...

You flip a switch, the lights go out, and you think: "Ah, the circuit breaker did its job." But wait--how does a circuit breaker store energy in the first place?



Technical guide Advance 27 27 kV medium voltage, metal ...

The accessory group for Advance 27 metal-clad switchgear and the AMVAC circuit breaker includes a complete array of required and optional special tools for proper handling, operation ...

Circuit breakers fundamentals

A circuit breaker is an electrical switch designed to protect an electrical circuit from damage caused by overcurrent/overload or short circuit. Its basic function ...



Energy Storage Principle of Switch: From Circuit Breakers to ...

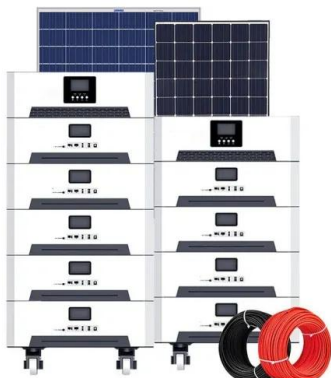
Why Should You Care About Switch Energy Storage? Ever wondered how your circuit breaker snaps into action during a blackout or why your smartphone charger doesn't weigh like a brick?

...

Circuit breaker electric energy storage failure

a) The automatic air circuit breaker controlling the energy storage motor should be closed in the 'parting' position. If the motor does not work, check whether the travel switch in the

...



WL Switchgear

Carefully observe how the flexible connectors are mounted to the switchgear (placement of bolts, nuts, washers and spacers) then remove the flexible connectors or carefully spread them to ...

Contact Us

For catalog requests, pricing, or partnerships, please visit:
<https://solar.j-net.com.cn>