

## What can be placed in the power storage cabinet of the integrated stove



## Overview

---

Hoenergy has created a full range of energy storage products including industrial and commercial energy storage, household energy storage and smart energy storage cloud platforms.

Hoenergy has created a full range of energy storage products including industrial and commercial energy storage, household energy storage and smart energy storage cloud platforms.

Of the three possible heat sources for a cooktop—gas, radiant-electric, or induction—my testing shows that induction is far and away the best option for nearly any kind of cooking. It's more consistent at low temperatures, it reaches higher temps faster, it stays cooler and cleaner, and it is.

There are technically 3 ways to add appliances to your kitchen alongside cabinetry. Freestanding, built in, and integrated. Here are more details on each option from least custom option to most custom: Freestanding Appliances: This is what you would traditionally see in a standard North American.

Just like a refrigerator and dishwasher, your stove or wall oven placement is vital in creating a functional workflow that can help streamline kitchen tasks. Whether you choose to place your oven in a kitchen island or within the cabinetry along a wall, the space should be tailored to your unique.

A portable induction cooktop is the only appliance allowed permanent space on her counters. We plan to test two new models with advanced temperature control: the Tramontina Guru and the Breville Control Freak Home. We're also evaluating the Ciarra Donut, which comes in multiple colors. Portable.

For proper air circulation, safety, and correct installation, some appliances must have air clearances around the product. Installations can vary, so checking the Installation Instructions to determine space requirements for your specific model is recommended. The following are general minimum.

In this video I'll walk you through the process of removing an existing

induction stove top and installing a new one. Learn everything from how to disconnect the power lines and hardwire new ones. Remember to always practice safety by wearing gloves and shutting off all power. more In this video. Where should a stove be placed?

Whether you choose a range or wall oven and cooktop, you will want to place your stove near an electrical outlet or gas hookup in your kitchen. This can help make the installation of your appliance run more smoothly. 2. AVAILABLE PREP SPACE NEEDED AROUND THE OVEN.

How do you organize a stove?

Choose an area for your stove near a countertop space so you have a place to put baking dishes when moving cookware in or out of your oven. This can be especially helpful when lifting a heavier pan as with basting a turkey. Cabinet and drawer space nearby can also be convenient when organizing oven accessories, like oven mitts and sheet pans.

What is the difference between a full induction range and a portable cooktop?

Whereas a full induction range or cooktop could have a couple of different element sizes or even an entire surface that serves as a cooking area, portable cooktops with only one burner generally provide a medium-size element that works with a broad range of pots and pans.

How do you put a stove in a kitchen?

4. WORKSPACE FLOW Consider placing your stove or wall oven and cooktop in a work triangle with your refrigerator near the kitchen entrance, the sink between the refrigerator and stove and the stove opposite the sink and refrigerator. This arrangement creates a triangle layout to help streamline kitchen tasks.

Can a portable induction cooktop be a permanent space?

A portable induction cooktop is the only appliance allowed permanent space on her counters. We plan to test two new models with advanced temperature control: the Tramontina Guru and the Breville Control Freak Home. We're also evaluating the Ciarra Donut, which comes in multiple colors.

How do I choose a space for my oven & cooktop?

When planning a kitchen remodel, the placement of your stove or wall oven

and cooktop can impact certain factors such as installation, workflow, accessibility and design aesthetic. The following considerations can help you determine a space for your oven that can work well in your kitchen layout. 1. PROXIMITY TO FUEL OR OUTLETS

## What can be placed in the power storage cabinet of the integrated ...



### What Is a Battery Stove? How It Works, Pros, Cons, ...

What is a battery stove? Battery stoves are induction ranges that use a battery to power them. They work by being plugged into a standard ...

### Perfectly Integrated: How to Fit a Microwave in a Cabinet

In today's fast-paced world, convenience in the kitchen is paramount. One popular solution is fitting a microwave into a cabinet, providing both functionality and aesthetic appeal. But how do ...



### Highvoltage Battery



### What is an integrated stove?

An integrated stove is a highly functional kitchen appliance product that integrates multiple functions such as gas stoves, range hoods, large stir-fry, small stir-fry, clay pot stoves, storage ...

### Integrated Stove

Streamline your kitchen with our Integrated Stove. Sleek, space-efficient, and packed with features, it offers a variety of cooking methods in

one compact unit. Experience seamless ...



## Maximizing Space with Kitchen Cabinets Above Stove

Ideal Placement for Maximum Space Utilization  
 Positioning floating cabinets at eye level can enhance storage efficiency while keeping frequently used items within easy ...

## A Simple Cabinetry Guide for Built-in & Integrated ...

Integrated Appliances: Fully integrated appliances seamlessly blend into or alongside the cabinets. The appliance fronts are in line with the ...



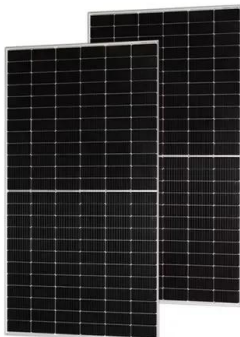
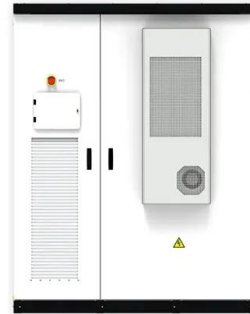
## Empty space next to stove : r/HomelImprovement

-put an 18" or 12" cabinet between stove and door (calculating clearance for walking) -turn the fridge alcove into a pantry with pullouts or a door and U-shaped shelves to make it a step-in ...



## Cabinet-integrated range

A cabinet-integrated hood is a hood that can be built into the cabinet above your stove. In many Danish kitchens, the cabinet for, for example, spices or cookware is placed above the stove in ...



## **What are the advantages of integrated stoves? Integrated stove ...**

The gas stove is a household kitchen appliance that we are very familiar with. In recent years, there has been an integrated stove. The integrated stove is a kind of kitchen appliance that ...

## **How close can a stove be to a cabinet?**

Can you put a cabinet over a stove? While you may want everyday paper goods within easier reach, the cabinet above your stove is perfect for storing surplus items. Tuck ...



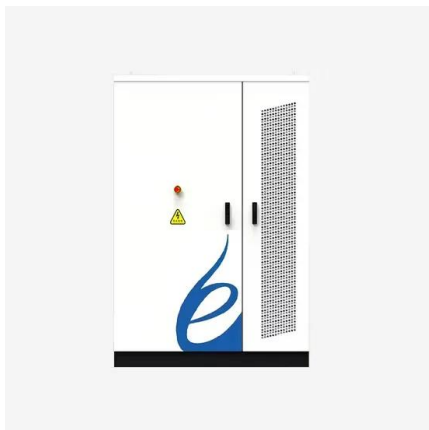
## **8 Considerations For Kitchen Oven and Stove ...**

While it can be exciting to design a new kitchen, there are certain factors you may not want to overlook in planning the layout of appliances. Just like a ...



## How much space between the stove and cabinet?

Additionally, having the proper space between your stove and cabinets can also help with ventilation, preventing any potential fire hazards and promoting air circulation in your kitchen. ...



## Looking To Blend Your Range Hood Into Your Cabinetry , Faber

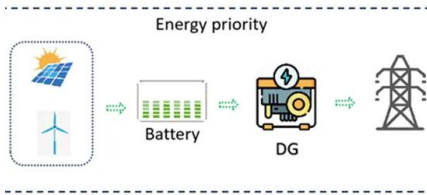
Cristal SS For a streamlined look in the kitchen, the Cristal slide out hood is your integrated choice with a Stainless Steel pull-out visor which slides in, neatly tucking the hood ...

## What is an Integrated Griddle on Stove? A Comprehensive Guide

An integrated griddle on a stove is a cooking surface built directly into the stovetop itself, typically replacing one or two of the standard burners. It offers a convenient, all ...



## 5 DISHWASHER PLACEMENT IDEAS



2 ????. Getting the placement of your dishwasher right is an important step in creating a kitchen that inspires. A dishwasher should be in close proximity to a ...

### Maximizing Space: What Can I Put Between Stove and ...

When it comes to kitchen design, every inch of space counts. The area between your stove and refrigerator often ends up as a neglected gap, leading to wasted potential. So, what can you ...



### The difference between integrated stove and split stove

Integrated stove is a set of range hood, gas stove, disinfection cabinet and other functions in one of the kitchen appliances. Its biggest feature is a high degree of integration, the integration of a ...



### How to install integrated environmental protection stove?

1. Power reservation: the power supply of the integrated stove cannot be left behind the integrated stove, because the thickness of the socket and plug may make the integrated cooker protrude ...



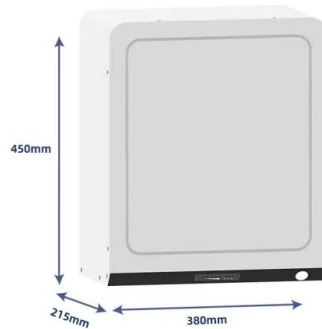
## Can You Put A Fridge Next To An Oven? - Expert ...

? You can place a fridge next to an oven if they're integrated models with proper insulation. Ensure good ventilation and door clearance, ...



## Stove in Corner of Kitchen Pros and Cons

Can a Stove Go in the Corner of a Kitchen? As you can likely guess, choosing a stove placement in the corner is possible, especially if you're aiming to save ...



## 10 Types of Stoves/Cooktops (And the Pros & Cons of ...)

Are you shopping for a new stove or cooktop but aren't sure which type to buy? In this comprehensive guide, I break down the pros and ...



## Outdoor Energy Storage Integrated Cabinet: The Future of Portable Power

With solid-state batteries and graphene tech around the corner, today's outdoor energy storage integrated cabinet might soon seem as quaint as flip phones. But here's the kicker: modular ...



## Can the power storage cabinet under the integrated stove be ...

...

The integrated stove brings together multi-functions such as range hoods, stoves, disinfection cabinets, storage cabinets, etc. It solves the problem that traditional range hoods cannot ...

## Can You Place a Refrigerator Next to a Stove? A Comprehensive ...

When designing your kitchen, it's natural to consider the layout and placement of your appliances. Among the many questions that arise, one frequently asked is whether you can place a ...



## Integrated stove disassembly and installation method

Integrated stove is a kitchen equipment necessary for modern family kitchen. But the installation and dismantling process of the integrated stove is still relatively difficult. Here are the steps and ...



## Can You Put a Microwave in a Cabinet (7 Practical ...

Although possible, there are some considerations before you can put a microwave in a cabinet. Microwaves are specifically designed to be ...



## Fuel Storage Module Stove: Your Ultimate Guide to Safe and ...

Fuel Storage FAQs (That Don't Put You to Sleep)  
 Q: "Can I use my module stove upside down?" A: Only if you want to impersonate a space shuttle launch. Most models require upright ...

## Unlock kitchen efficiency: the game-changer over stove cabinet ...

What To Know An over stove cabinet for microwave is a brilliant solution for optimizing space and maximizing convenience in your kitchen. While it is possible to install the ...



## Contact Us

---

For catalog requests, pricing, or partnerships, please visit:  
<https://solar.j-net.com.cn>